

No Onward Chain! This two bedroom ground floor 'Tyneside' flat is ideally located on Grosvenor Gardens, Jesmond Vale. Situated close to Jesmond Dene, the cafés, shops and restaurants of Jesmond, excellent local transport links and indeed Newcastle City Centre itself, Jesmond Vale is the perfect location for professional buyers.

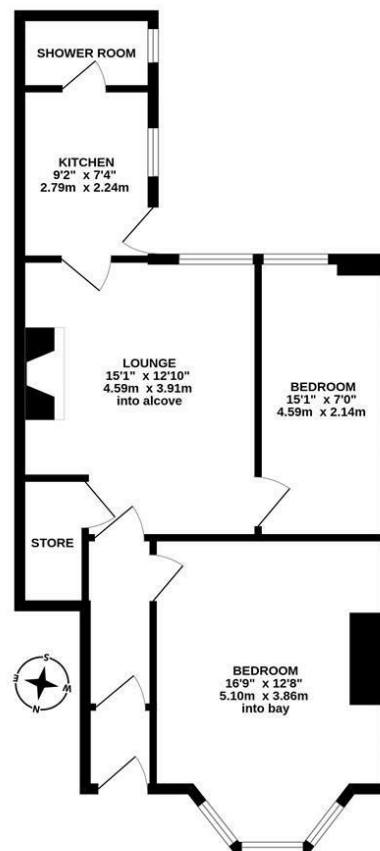
With period features, the property briefly comprises; entrance porch through to hallway; double bedroom to the front with bay window, lounge central to the flat with spacious store cupboard and feature fireplace; bedroom two, a double accessed via the lounge; modern kitchen with appliances, tiled splash-backs and spotlighting; shower room with WC. Externally there is a private decked yard to the rear as well as a garage, ideal for storage. To the front, further on street parking.

Ground Floor Tyneside Flat | 625 Sq. ft (58 m2) | Two Double Bedrooms | Lounge | Kitchen | Shower Room WC | | Stripped Wood Flooring | On Street Parking | Private Rear Yard | Garage | DG & GCH | No Onward Chain | Leasehold- Tyneside Lease- Peppercorn Ground Rent | Council Tax Band: A

EPC: D



GROUND FLOOR  
625 sq.ft. (58.0 sq.m.) approx.



TOTAL FLOOR AREA : 625 sq.ft. (58.0 sq.m.) approx.

Whilst every attempt has been made to ensure the accuracy of the floorplan contained here, measurements of doors, windows, rooms and any other items are approximate and no responsibility is taken for any error, omission or mis-statement. This plan is for illustrative purposes only and should be used as such by any prospective purchaser. The services, systems and appliances shown have not been tested and no guarantee as to their operability or efficiency can be given.  
Made with Metropix ©2024

**Offers Over £180,000**

**IMPORTANT NOTE:** These particulars and the descriptions and measurements herein do not constitute representation and whilst every effort has been made to ensure accuracy, this cannot be guaranteed.

